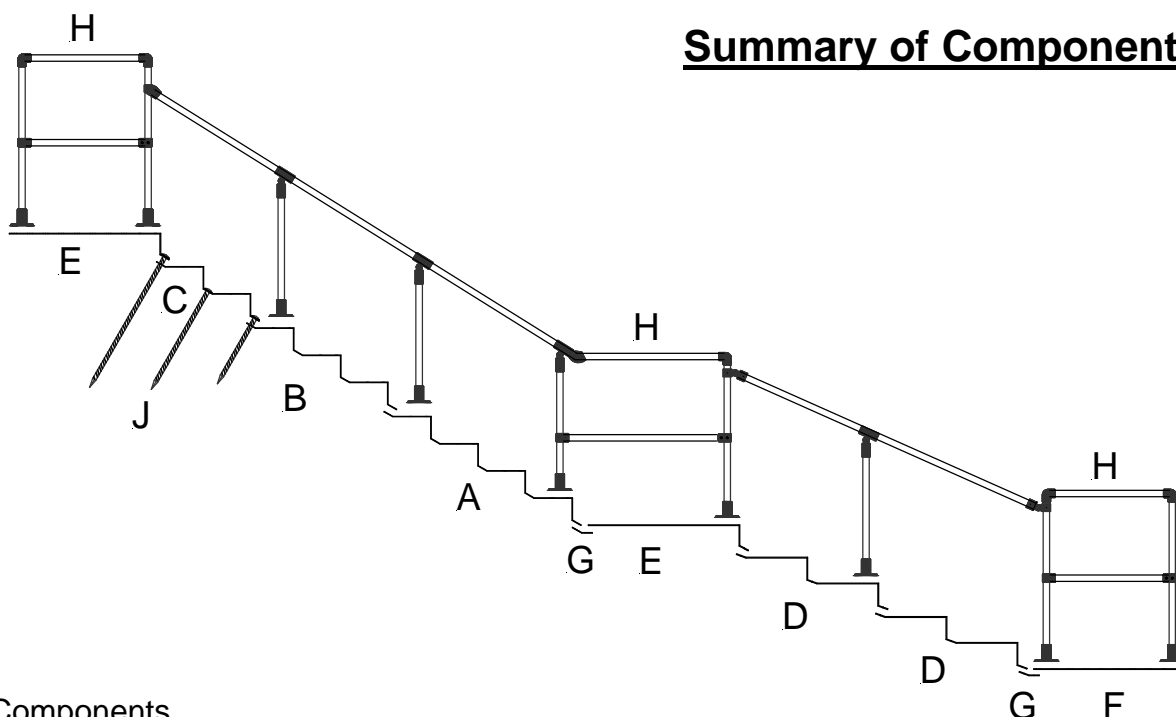


KWIK-STEP Modular Stairway System

Summary of Components



Components

- | | | |
|---|---|---------|
| A | Standard Stairway: | 4 Steps |
| B | | 3 Steps |
| C | | 2 Steps |
| D | Shallow Stairway: | 2 Steps |
| E | Top / Middle Landing | |
| F | Bottom Landing / Extension | |
| G | Landing Connector Plate | |
| H | Safety Barrier | |
| J | Galvanized Stakes (available in lengths of 1m, 75cm and 50cm) | |

Notes

- 1 A landing module is required at the top of each flight (as the landing incorporates the top riser)
- 2 Stairway and landing modules are available in the following gradients:
Shallow Stairway: 12°, 14°, 16°, 18°, 20°
Standard Stairway: 20°, 22°, 24°, 25°, 26°, 28°, 30°, 32°, 35°, 40°, 45°
- 3 The slope length for each step is 36cm for Standard Stairway and 50cm for Shallow Stairway
- 4 Landings have a standard length of 1metre. Alternative lengths are available for complex sites and longer lengths can also be formed with extension plates
- 5 A 'dog-leg' landing is formed by installing 2 modules side-by-side, with an additional safety barrier on the exposed edge
- 6 Stakes have been omitted for clarity. They are inserted through the overlaps and along the sides of the modules. Permanent stairways are normally installed with 1m ribbed in:
 - every hole on the flights
 - alternate holes along the sides of the landings